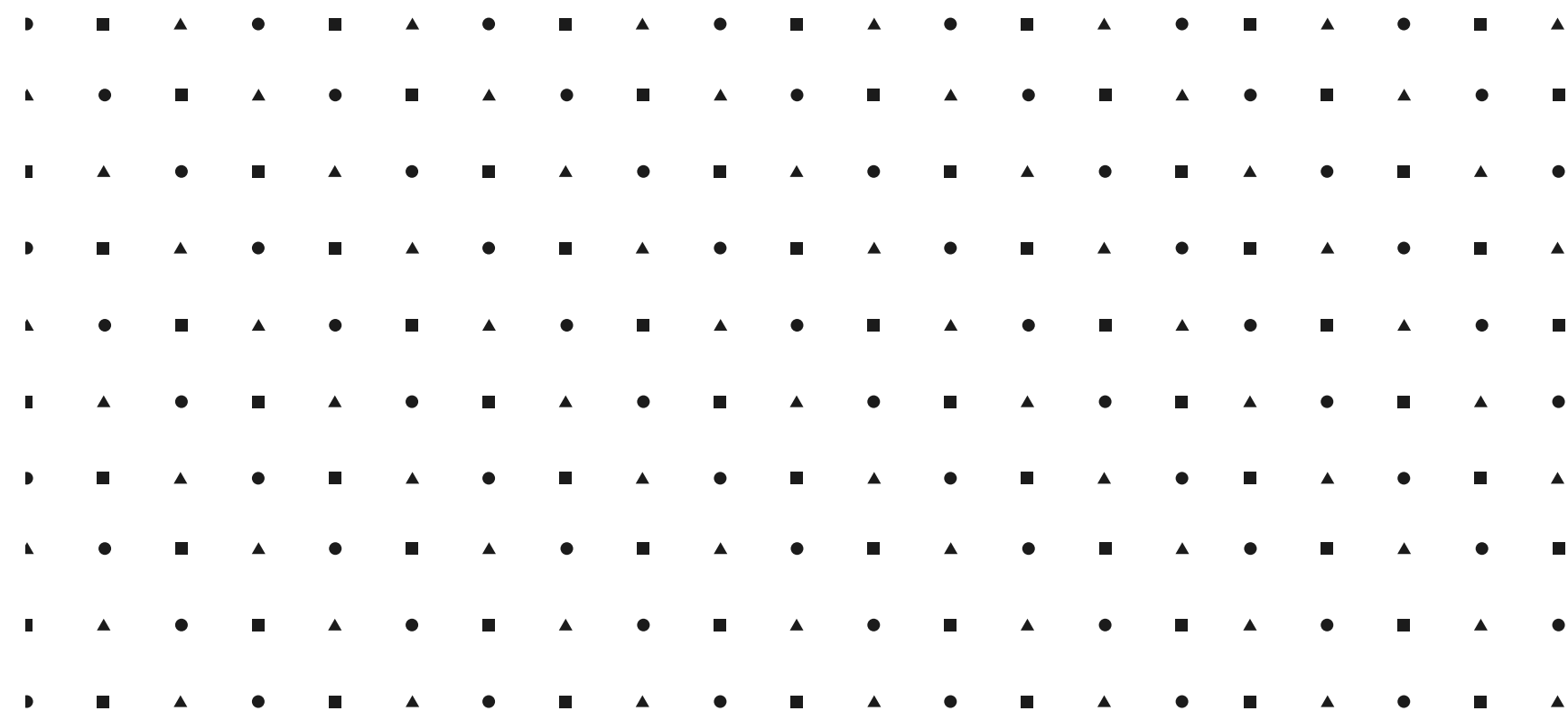


Schweizerische Eidgenossenschaft  
Confédération suisse  
Confederazione Svizzera  
Confederaziun svizra

**Embassy of Switzerland in South Africa**

# Study in Switzerland

Webinar - 16 August 2022





# Switzerland

- **8.7 million inhabitants**
- **4 national languages**
- **26 provinces & federal system**
- **7 heads of state: Federal Council**
- **direct democracy**

# Higher Education in Switzerland

# Higher Education in Switzerland

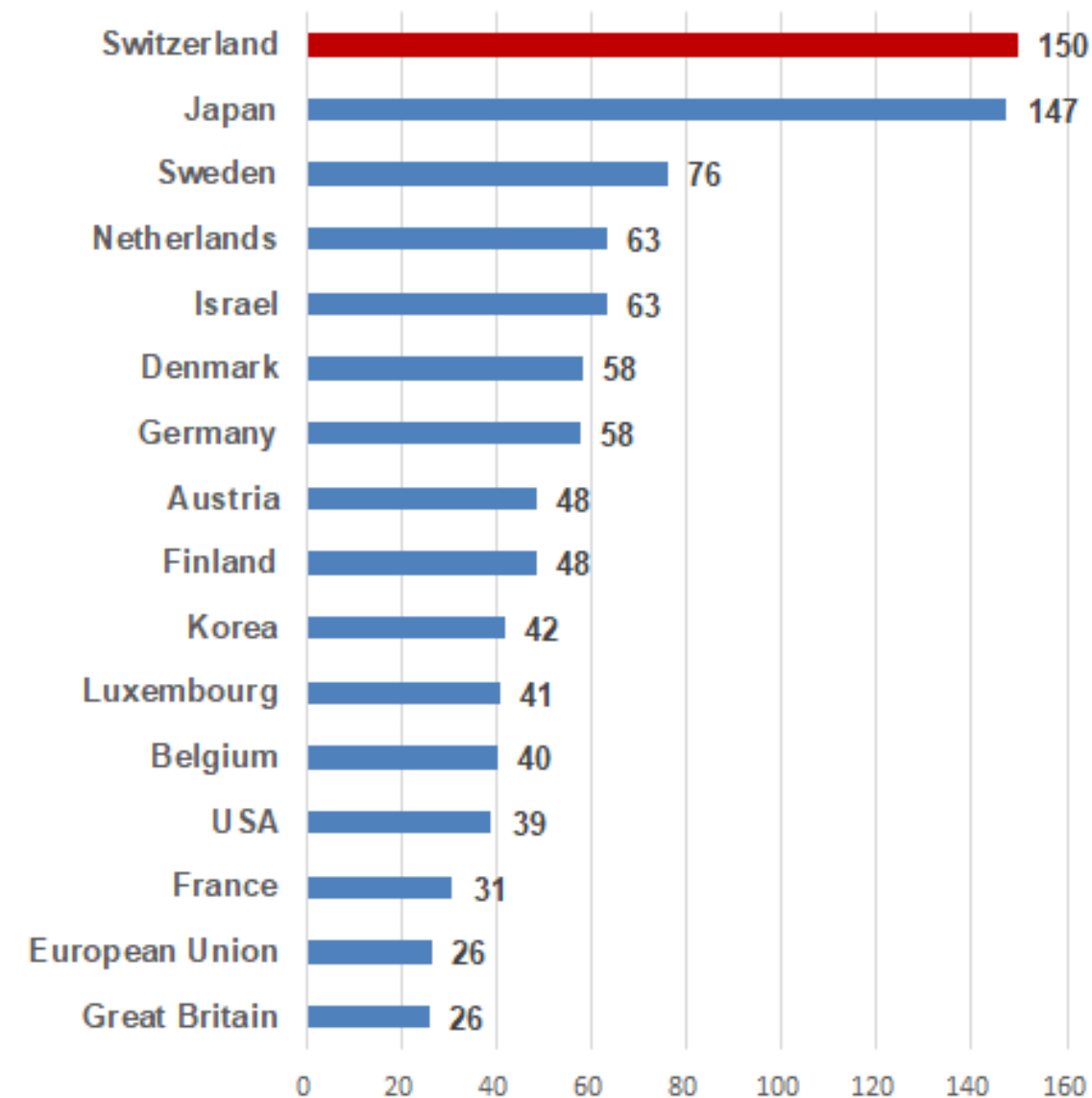
- Academic Excellence
- Outstanding Rankings
- Innovation
- International
- High Employability

## International University Rankings

	EPFL	ETHZ	Basel	Bern	Fribourg	Geneva	Lausanne	Neuchatel	St. Gallen	USI	Zurich
Shanghai 2020	83	20	88	101-150	401-500	59	151-200			701-800	56
QS 2022	14	8	138	119	561-570	105	176		459	240	70
THE 2021	43	14	92	109	351-400	149	191	401-500	401-500	251-300	73
Leiden 2020	16	15	62	206	165	106	98				76

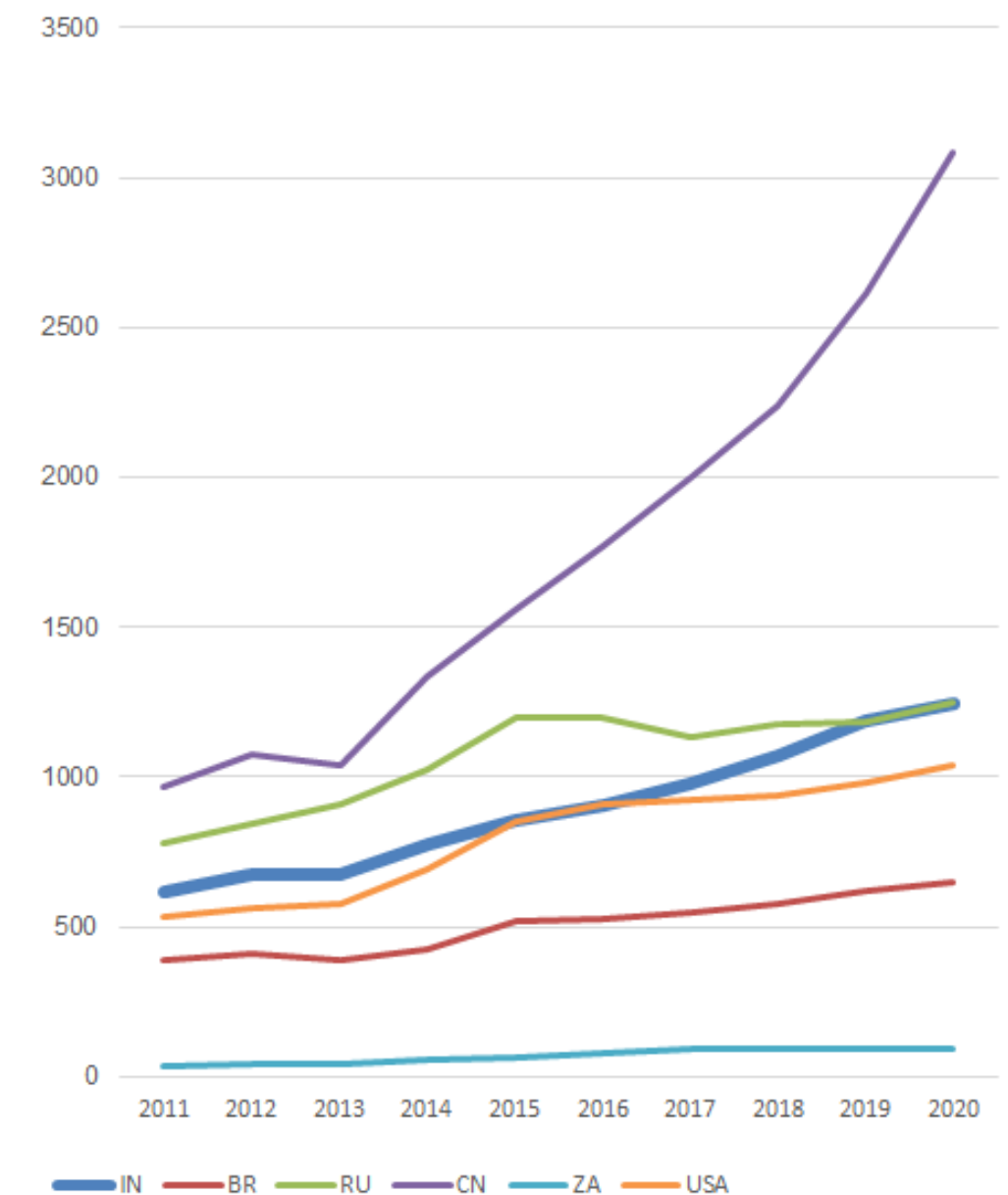
## Triadic patents per million inhabitants 2018

Source: Federal Statistical Office, OECD, 2018, updated 2021



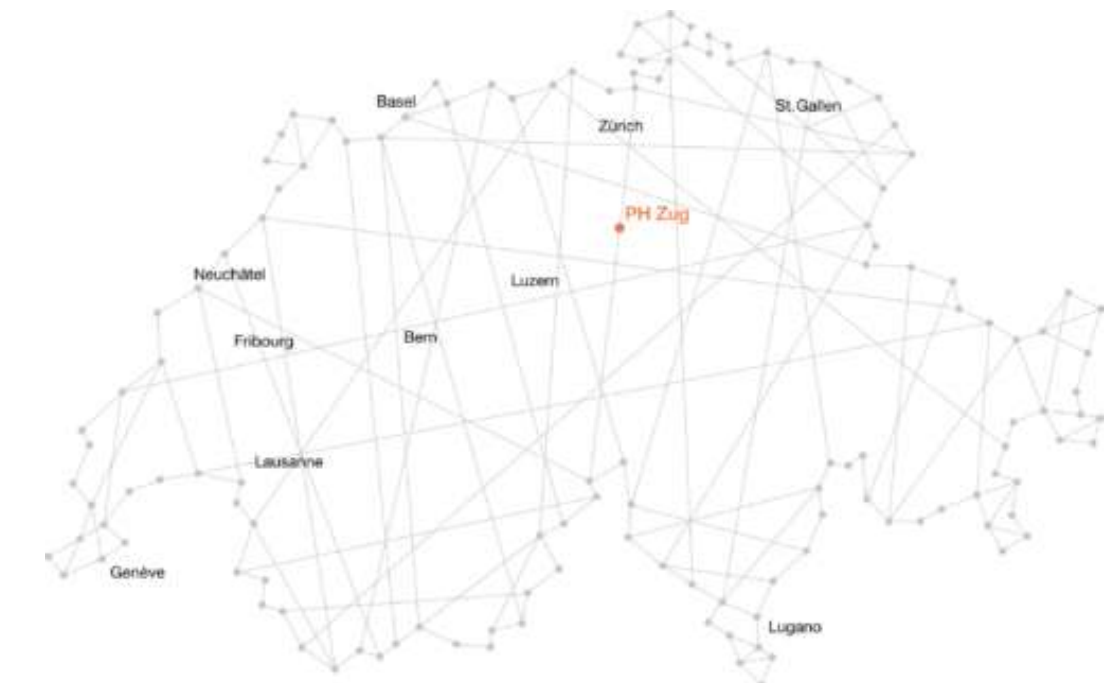
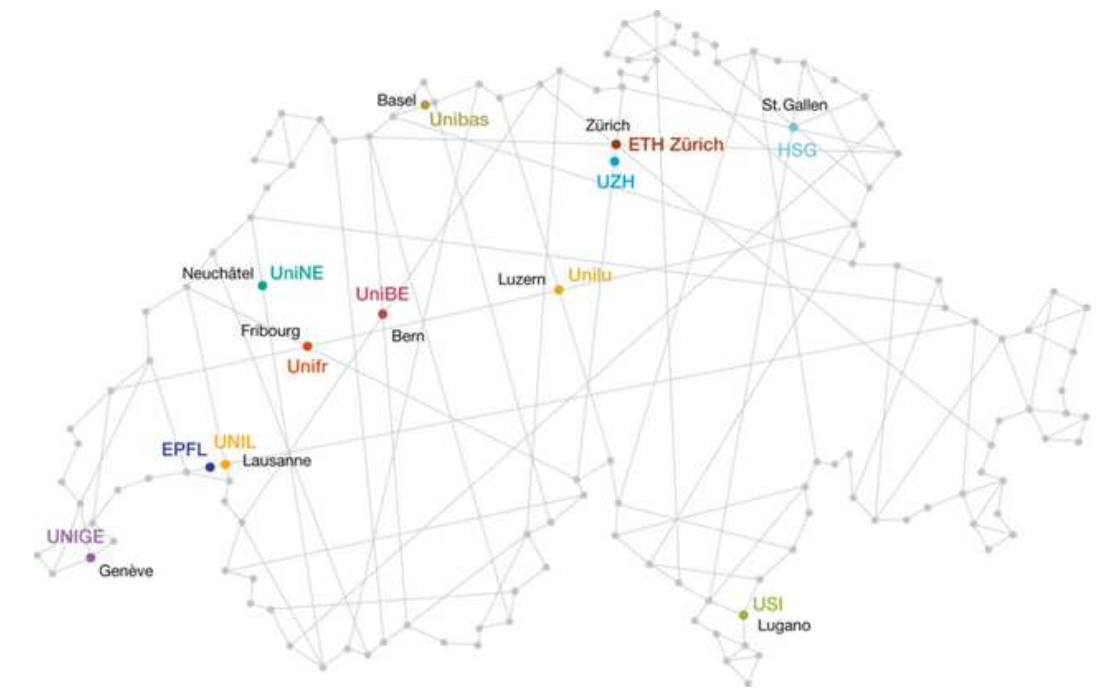
## Evolution of the number of foreign students from selected countries in the Swiss public university system (2011-2020)

Source: Federal Statistical Office



# Universities

- 01 Traditional Universities
  - Fundamental research and top teaching
  - 10 cantonal universities and two federal institutes of technology, with the oldest institution having been founded in 1460 (University of Basel), and the youngest in 2000 (University of Lucerne).
- 02 Universities of Applied Sciences and Arts
  - one private and eight public Swiss universities of applied sciences and arts
  - close partnerships with companies, institutions and other organizations in the educational sector
  - Combining practice-oriented teaching and application-oriented research
- 03 Universities of Teacher Education
  - 20 universities of teacher education (UTES)
  - programmes in teaching for pre-primary level, primary level, secondary level I, secondary level II (including general education and vocational education and training) and other programmes such as special needs education.





# Study Culture



01

## Language

English is a highly common instruction language  
Research is mainly conducted in English

02

## Classes

Universities combine theoretical approaches and practical applications linked to fundamental research. Universities of applied sciences and arts focus on problem-based and hands-on learning that is in general related to R&D projects with real-time implementation.

03

## Leisure

Studying in a Swiss university, you will be blissed out by the fantastic variety of organized sports your university offers students.

The universities also have multiple community initiatives or offer free language courses.

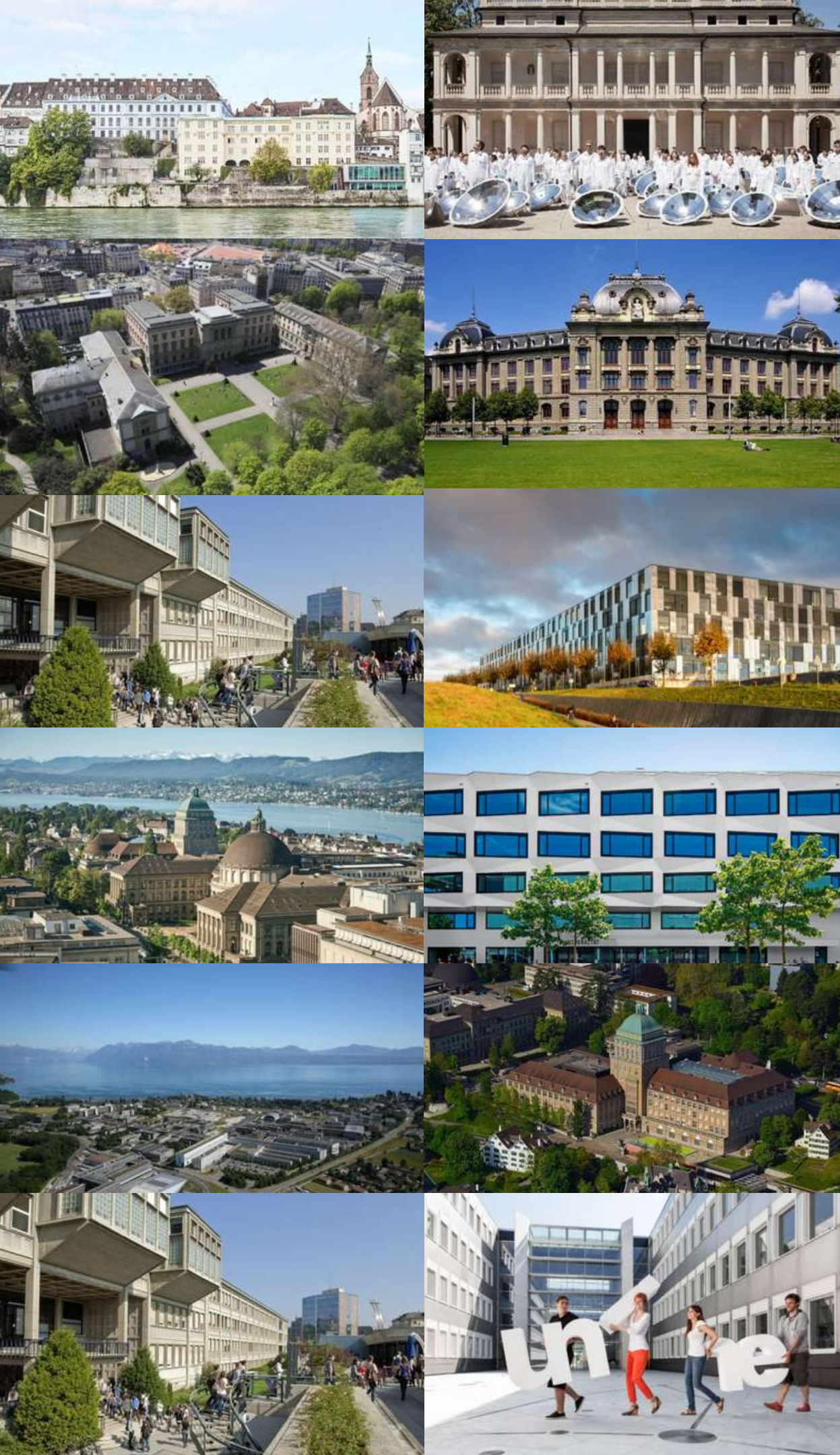
# Living Why Switzerland?



- Safety & Stability
- Quality of Life
- International Outlook
- Culture



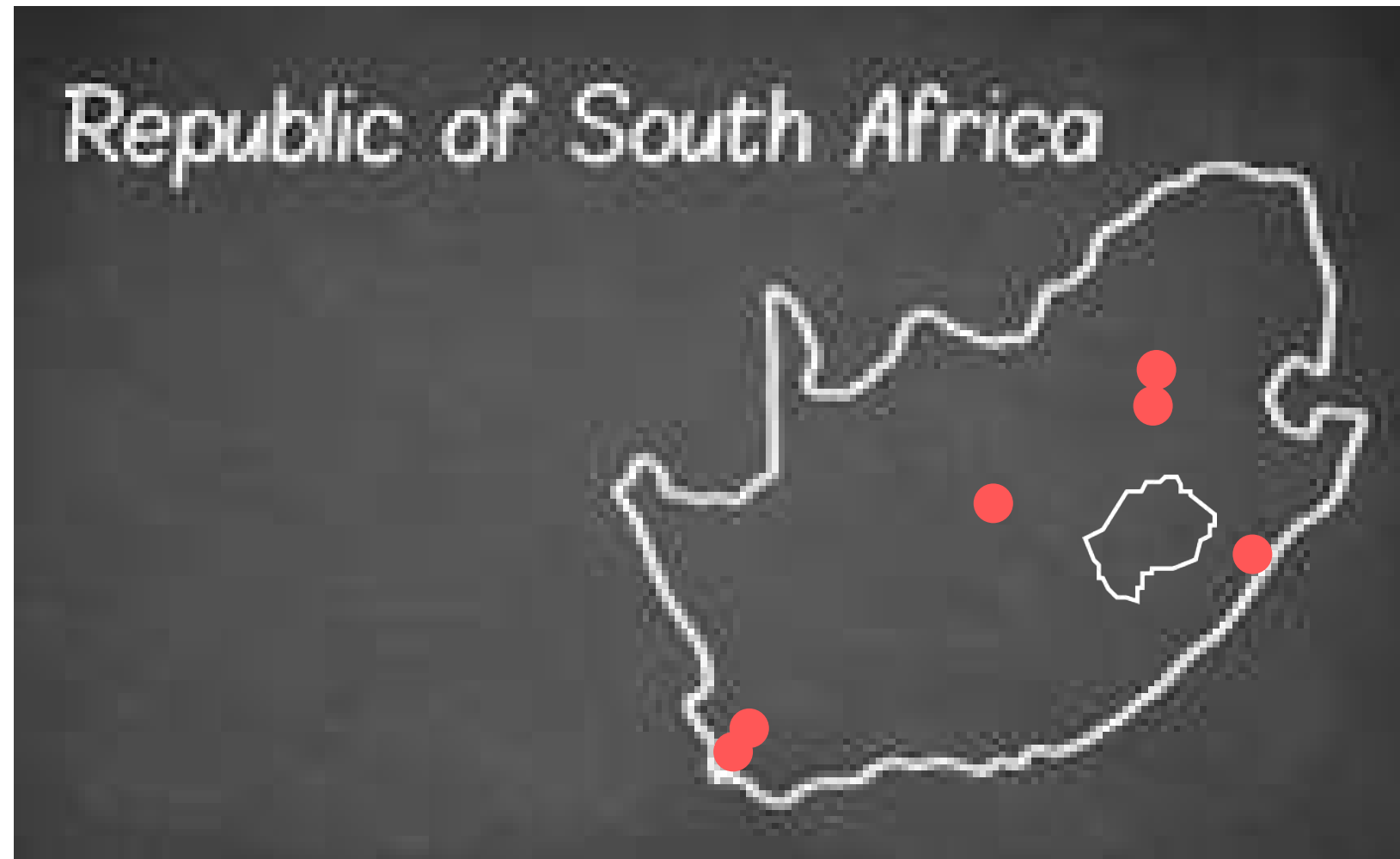




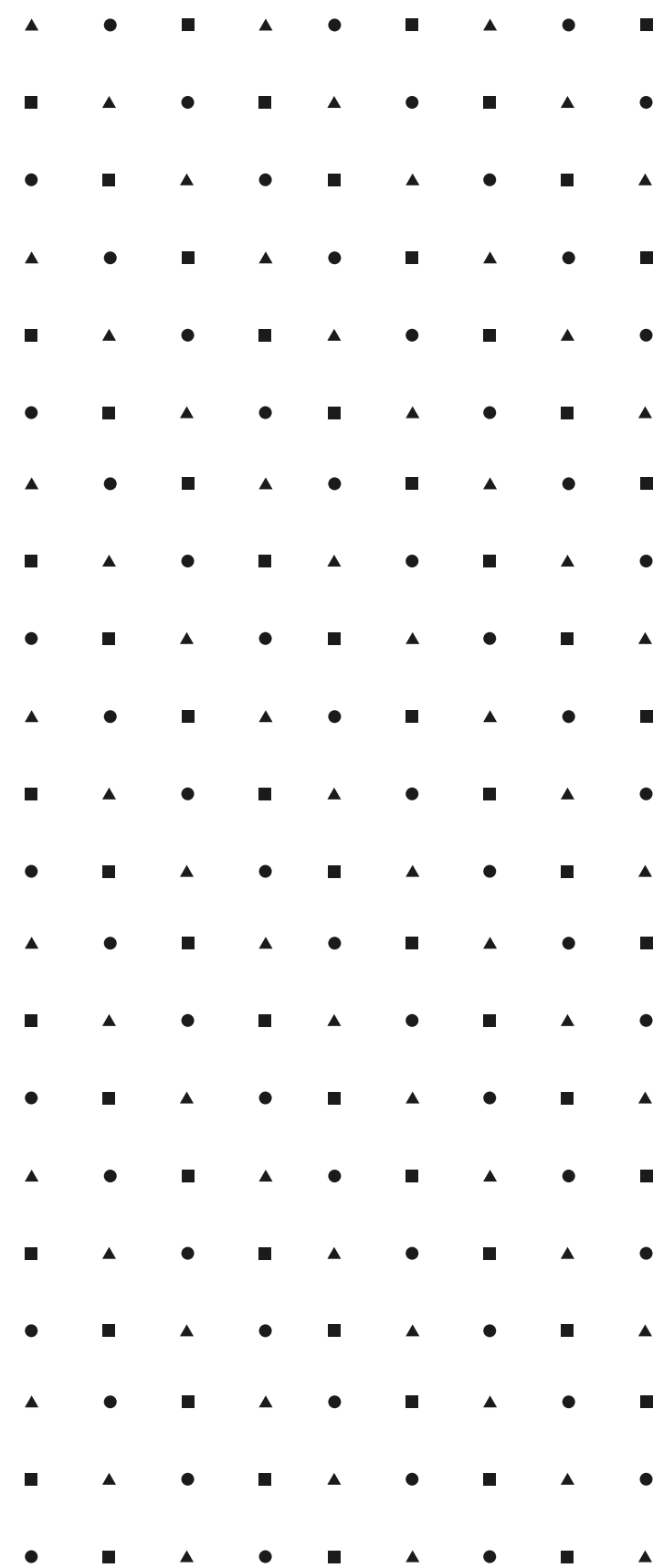
# Swiss Government Scholarships



# 2021 South African Fellows



Mathematical Sciences/Physics/African Literature/Heritage and Museum Studies/Plant Pathology/LLM/Urban Planning/Environmental Health/Sociology/Biochemistry/Chemistry/Physiological Sciences



## Research Fellowship

- full-time research in Switzerland.
- not valid for mixed research (part time in Switzerland and part time in another country)
- not available for scholars holding a PhD degree
- 12 months maximum (starting in September); no prolongation possible. The research fellowship cannot be upgraded into a prolongable PhD scholarship.

## PhD Scholarship

- full-time PhD studies in Switzerland at a Swiss university. It is not valid for mixed PhD programmes
- “Cotutelle de these”: PhD students with an ongoing or planned doctoral project that is carried out within the framework of a formalized agreement between two universities (“cotutelle de thèse” cooperation between a Swiss and a foreign university) and under the joint direction of two supervisors are eligible for a 12 month research fellowship only.
- 12 months (starting in September) prolongable up to 36 months based on the achieved academic results.

## Post Doc Scholarship

- full-time postdoctoral research in Switzerland.
- not valid for mixed research (part time in Switzerland and part time in another country)
- 12 months (starting in September); no prolongation possible.

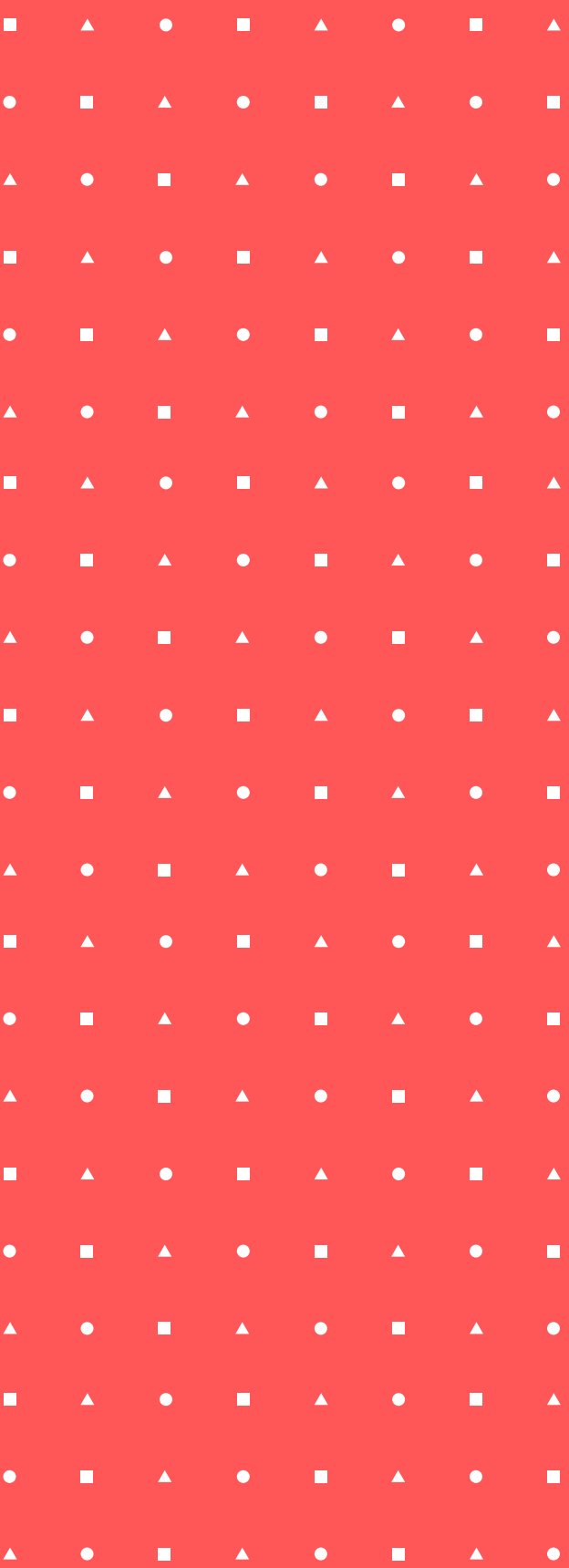
# Benefits

## Target Group

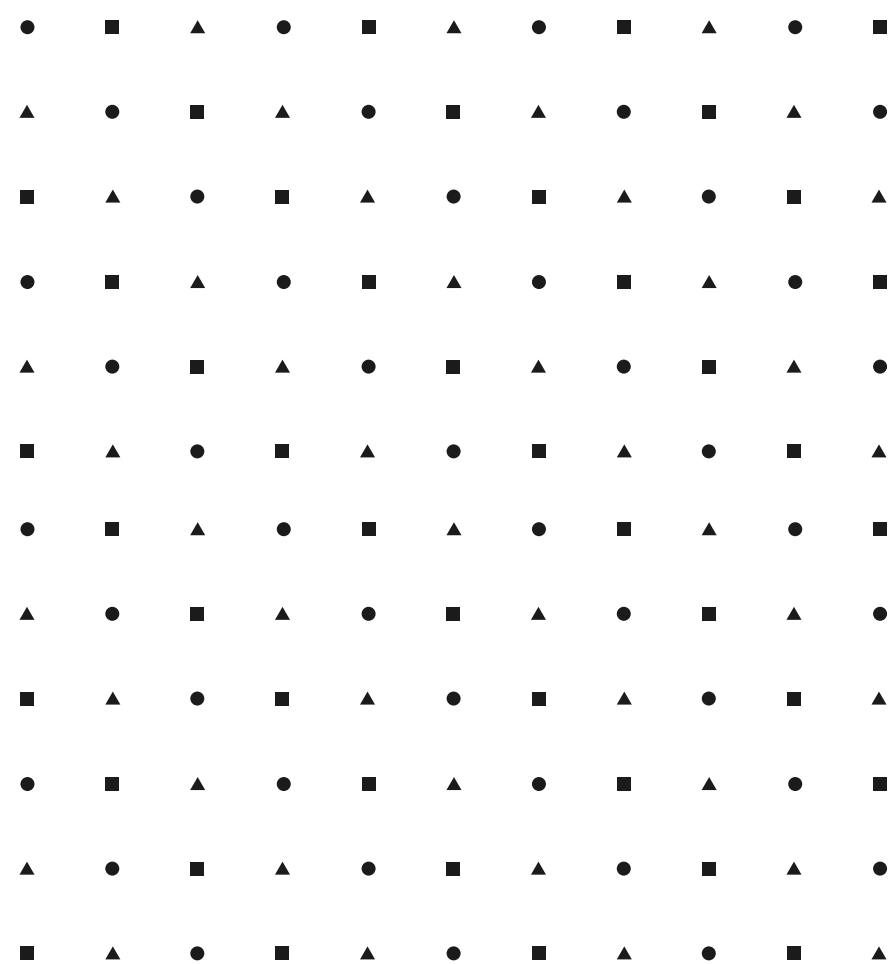
All academic fields

## Allowance per month

- CHF 1920/month (ZAR 34 849) for PhD & Research Fellows
- CHF 3500/month (ZAR 63 512) for Post Doc
- mandatory Swiss health insurance
- flight allowance (lump sum) for a ticket back to the country of origin (provided at the end of the scholarship).
- Special CHF 300 housing allowance (paid once at the beginning of the scholarship).
- One-year half-fare public transportation card.
- Support services organise various trips, dinners and sightseeing tours organised for Swiss Government Excellence Scholarship holders.







# Eligibility

- **Qualifications:** Research (masters July 2023); PhD (masters July 2023); Postdoc (PhD after 31 December 2019 and before July 2023)
- **Age:** PhD & research not >35yrs at moment of application (born after 31 December 1987)
- Acceptance from a Professor in Switzerland, stating that the person is willing to supervise the research
- Research proposal including a time frame
- Must not have benefitted from a Swiss Government Excellence scholarship in the past



# Selection Criteria

## The candidate

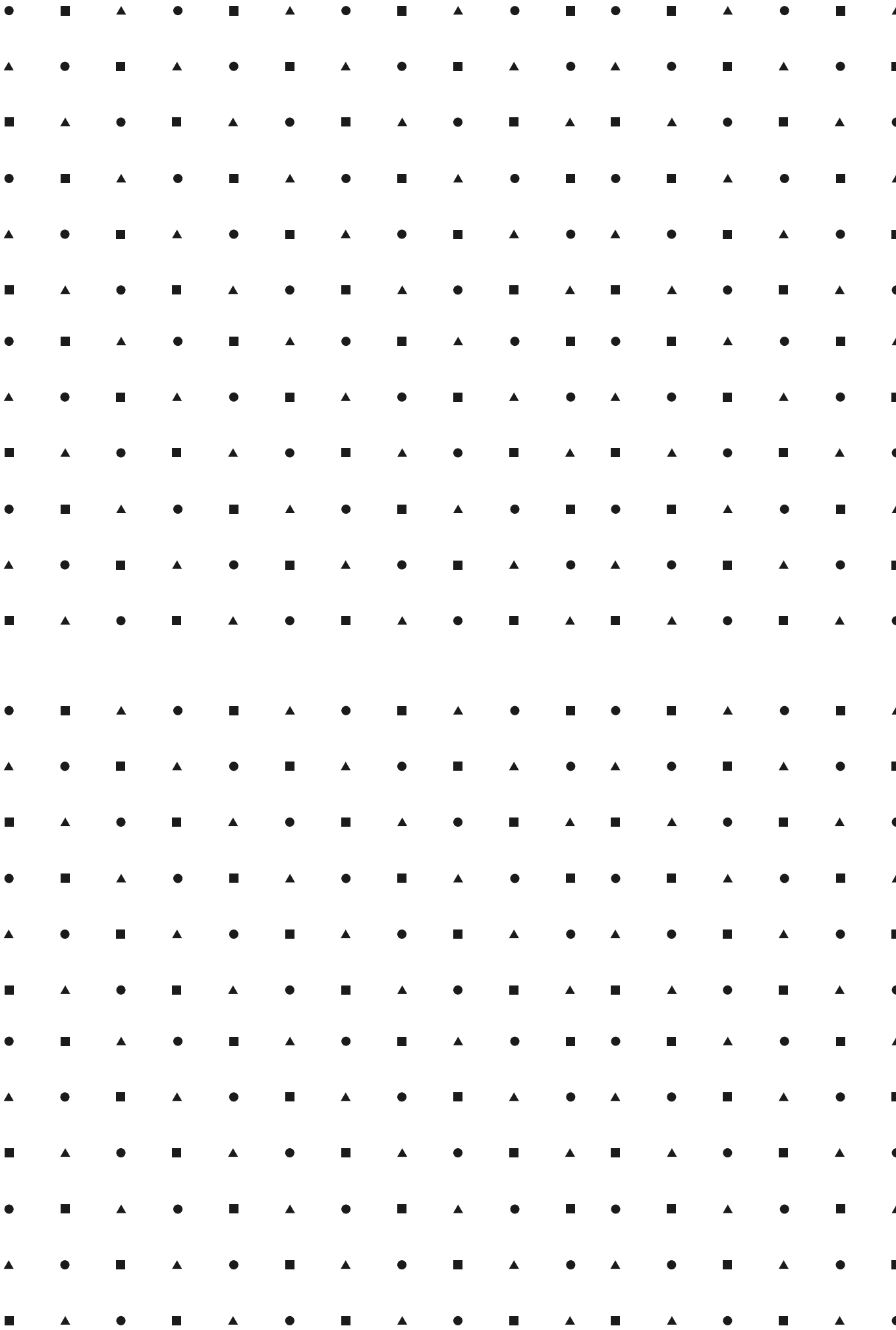
- Personal motivation
- Research capacity and academic potential
- Academic profile (grades, languages, presentation, distinctions, etc.)

## The research project

- Originality
- Methodology and feasibility of the project

## The academic context

- Potential for future academic cooperation
- Quality of support from the supervisor, suitability of the laboratory



# Application Timeline

1 AUGUST 2022

## Opening of the 2022 Call

- > prepare research proposal
- > search a Swiss supervising professor
- > get reference letters
- > complete application form

MARCH/APRIL 2023

Evaluation of applications by the Federal Commission for Scholarships for Foreign Students and a first announcement of results to candidates

MAY-AUGUST 2023

## Finalize your scholarship

- > obtain your study visa
- > provide the commission or university with any additional documents necessary

15 DECEMBER 2022

## Closing of the 2022 Call

- > application must be sent to the Embassy of Switzerland in Pretoria
- > applications will be sent to Switzerland for evaluation

BY END OF MAY 2023

## Final Selection Notification

The Foreign Commission on Scholarships will notify you directly on the outcome of your application per email

SEPTEMBER 2023

## Beginning of Scholarship





**Ready?**

# Thanks for attending!

We're here to support you!

Email us at [pretoria.science@eda.admin.ch](mailto:pretoria.science@eda.admin.ch)

Information on the Swiss Government Scholarships:

[www.sbf.admin.ch/scholarships\\_eng](http://www.sbf.admin.ch/scholarships_eng)

Information on studying in Switzerland: [www.studyinswitzerland.plus](http://www.studyinswitzerland.plus)

Swiss Universities:

[www.swissuniversities.ch](http://www.swissuniversities.ch)

Overview of all study programmes:

[www.studyprogrammes.ch](http://www.studyprogrammes.ch)

Swiss National Science Foundation

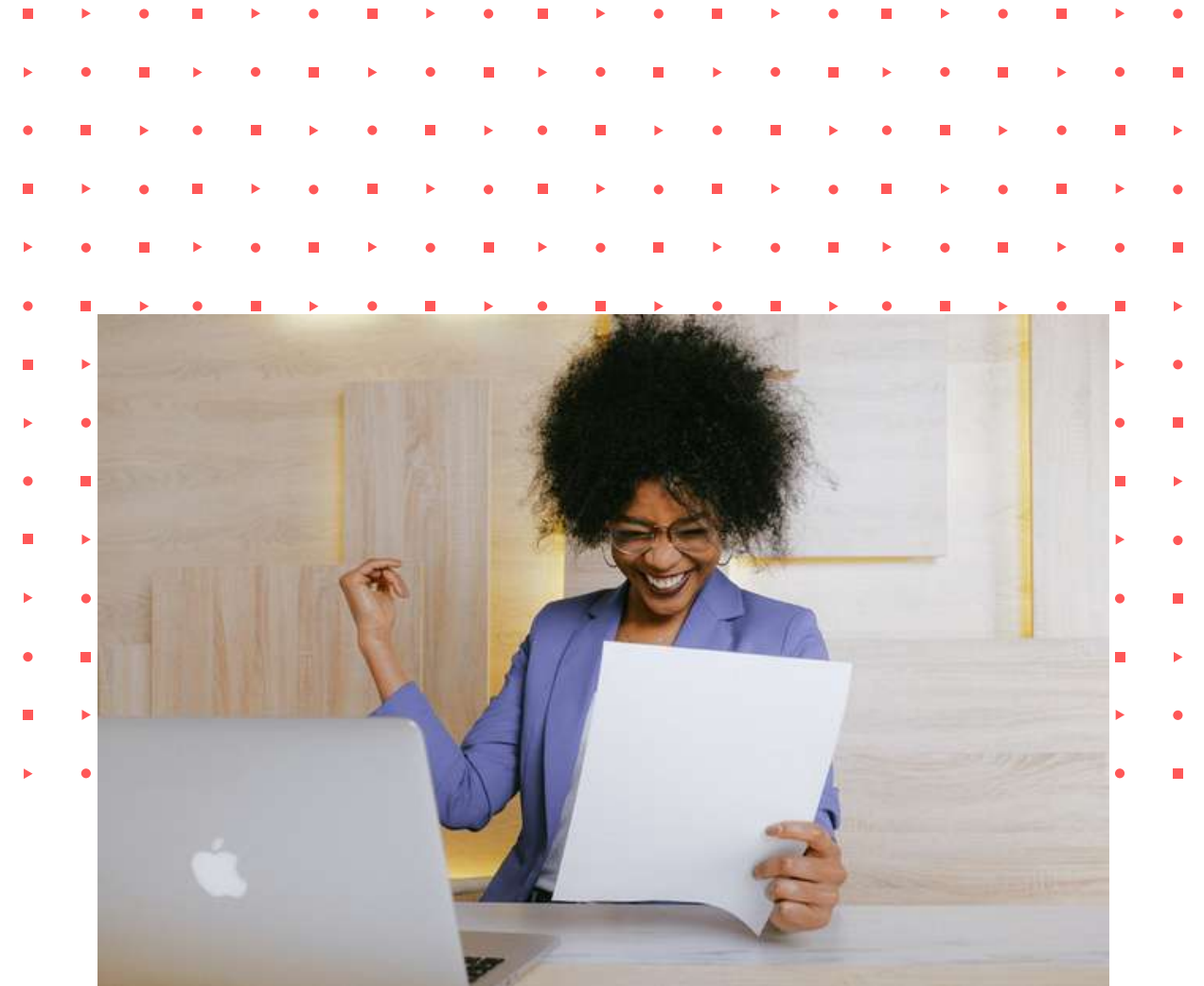
[www.snsf.ch](http://www.snsf.ch)

myScience.ch – The Swiss Portal for Research and Innovation

[www.myscience.ch](http://www.myscience.ch)

# Make your application a success!!

- Use the correct forms!
- Read the instructions given in the guide to applicants carefully before preparing your application and follow them
- Submit all required documents in two copies
- Pay particular attention to the research proposal
- Provide the required information only in each section
- Respect the page and character limits
- Ask for recommendation letters from people who know you and are in a position to assess your capabilities objectively



**Remember that putting together a successful application requires time and patience!**





- Recommendation letter from the prospective research supervisor should:
  - be specific and substantial
  - show his / her own motivation in having you as a researcher in his/her team
  - give an outlook for the future institutional collaboration
- The motivation letter is not your curriculum vitae!
- Why you, why this scholarship
- Get admission to (for PhD) / be accepted by (research and post-doc) the university of your choice
- A scholarship offered will be provisional until we get intimation of acceptance by the university
- Proof-read your application and make sure it is complete before submitting – incomplete applications will not be sent for evaluation

***Submit on time! Submit on time! Submit on time!***