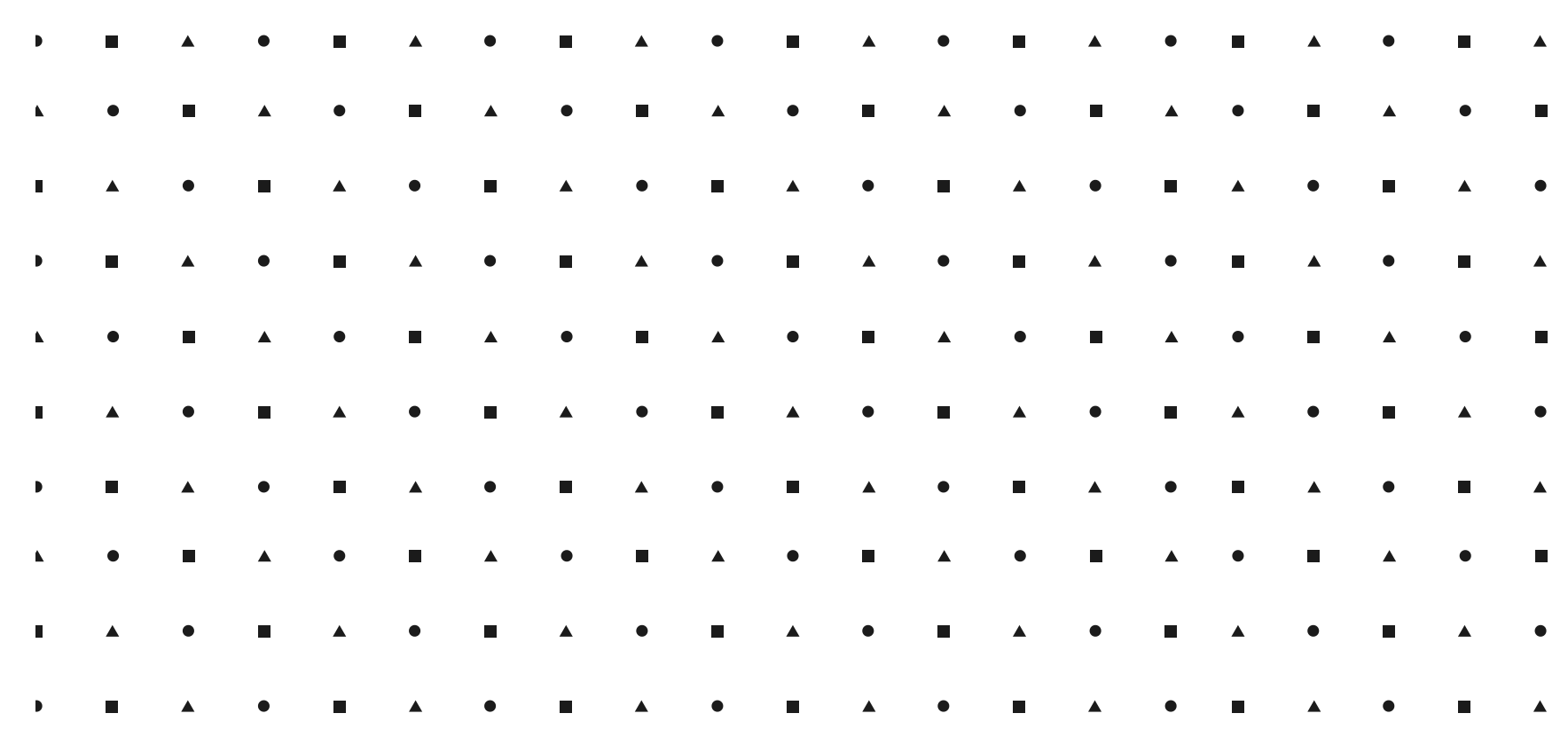


Schweizerische Eidgenossenschaft
Confédération suisse
Confederazione Svizzera
Confederaziun svizra

Embassy of Switzerland in South Africa

Study in Switzerland

Webinar - 31 August 2021

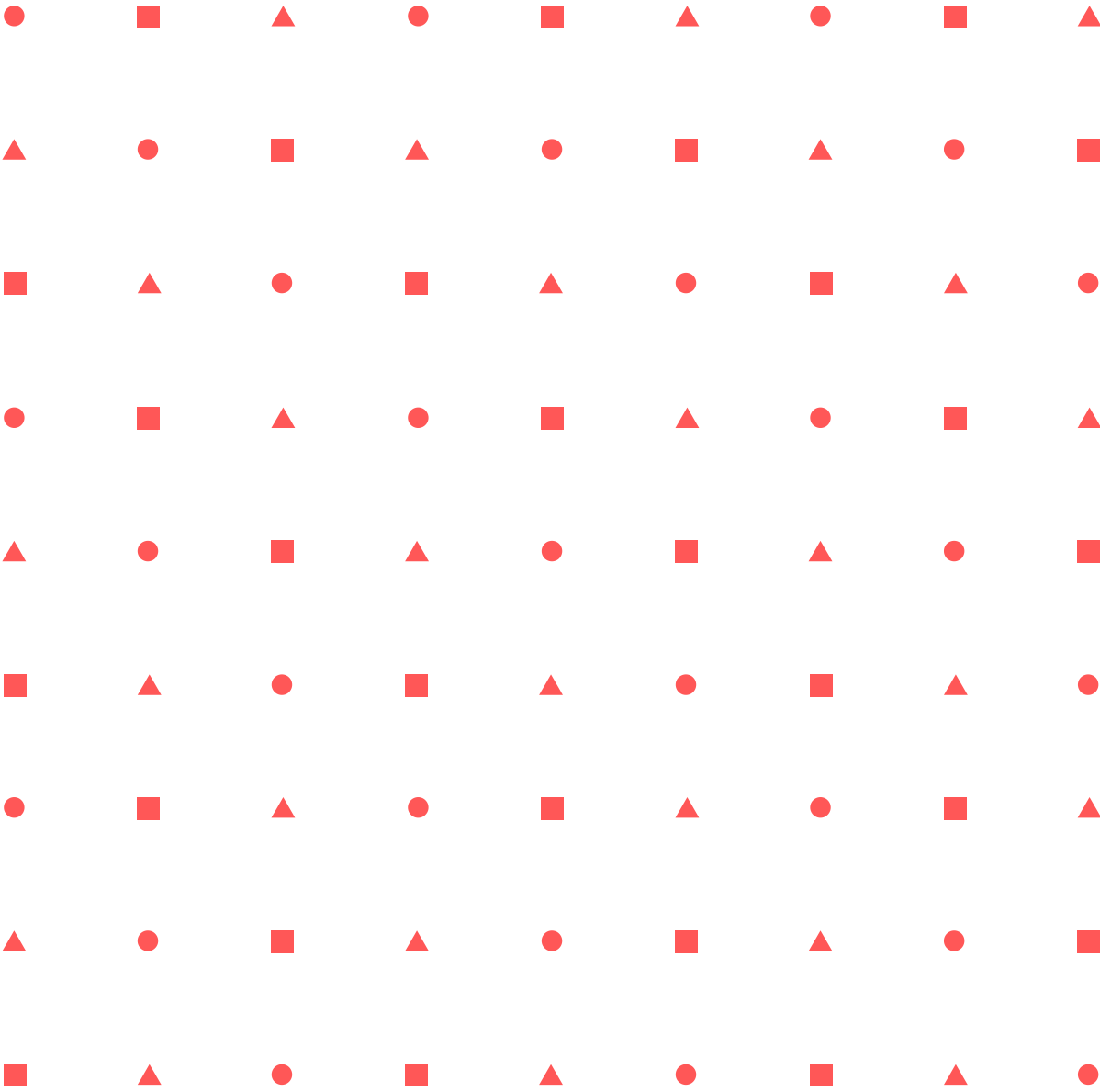




Switzerland

- **8.6 million inhabitants**
- **4 national languages**
- **26 provinces & federal system**
- **7 heads of state: Federal Council**
- **direct democracy**

Higher Education in *Switzerland*



Higher Education in Switzerland

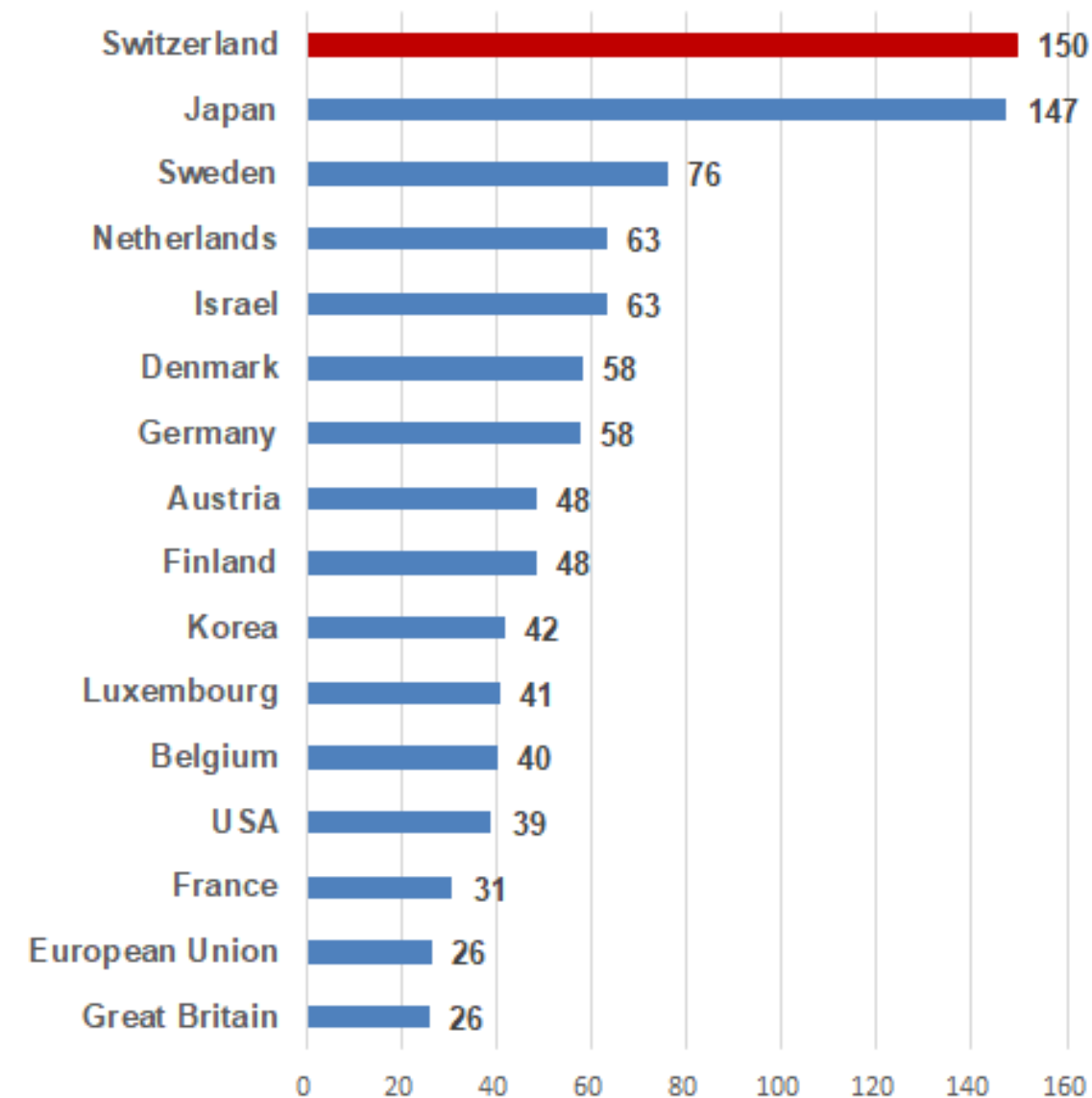
- Academic Excellence
- Outstanding Rankings
- Innovation
- International
- High Employability

International University Rankings

	EPFL	ETHZ	Basel	Bern	Fribourg	Geneva	Lausanne	Neuchatel	St. Gallen	USI	Zurich
Shanghai 2020	83	20	88	101-150	401-500	59	151-200			701-800	56
QS 2022	14	8	138	119	561-570	105	176		459	240	70
THE 2021	43	14	92	109	351-400	149	191	401-500	401-500	251-300	73
Leiden 2020	16	15	62	206	165	106	98				76

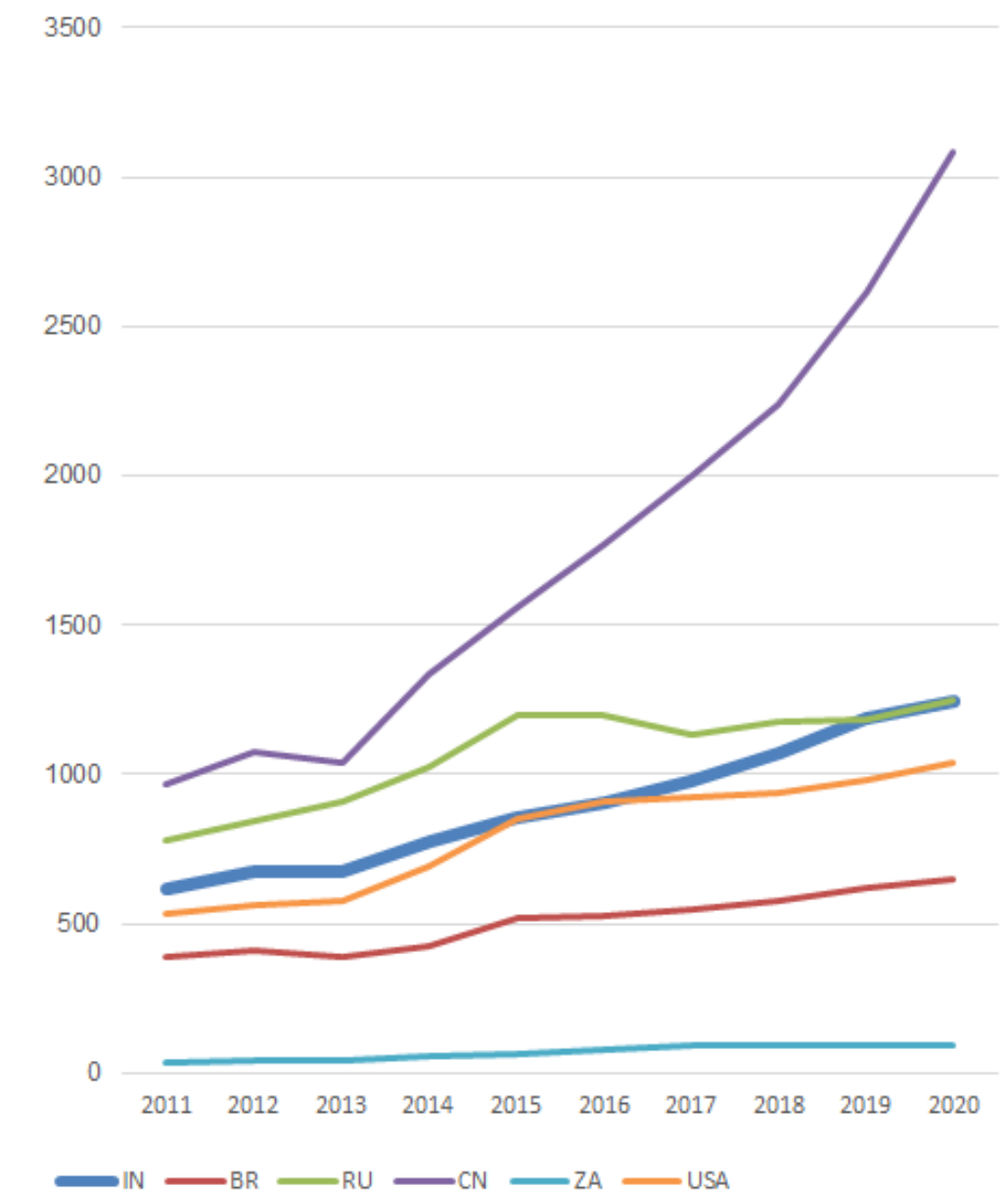
Triadic patents per million inhabitants 2018

Source: Federal Statistical Office, OECD, 2018, updated 2021



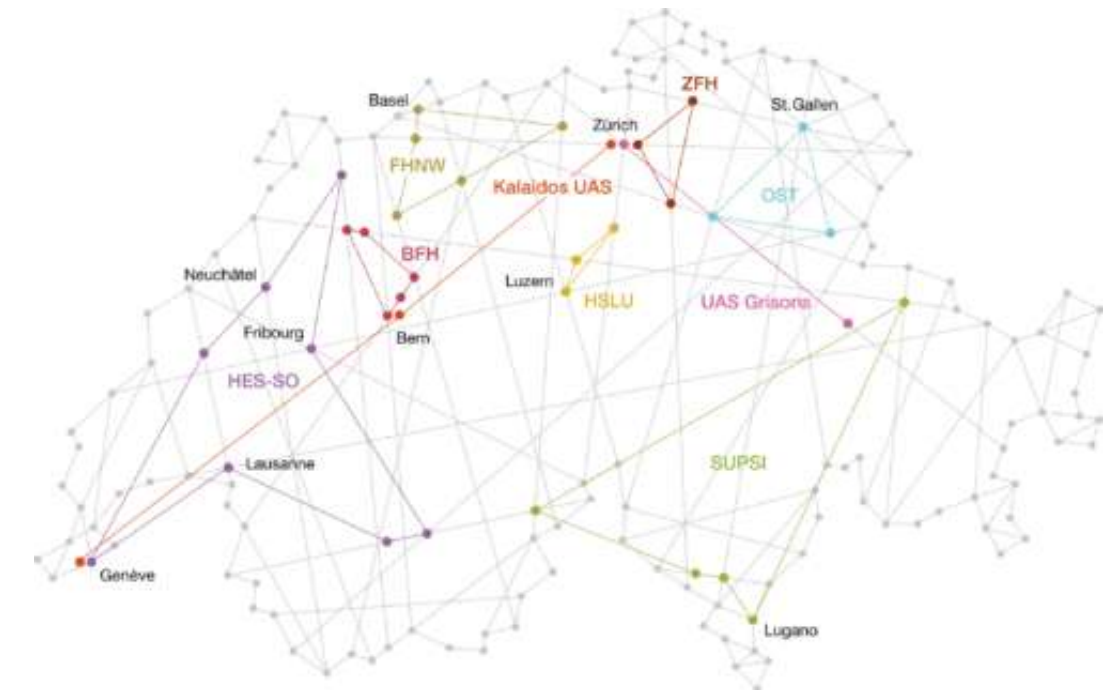
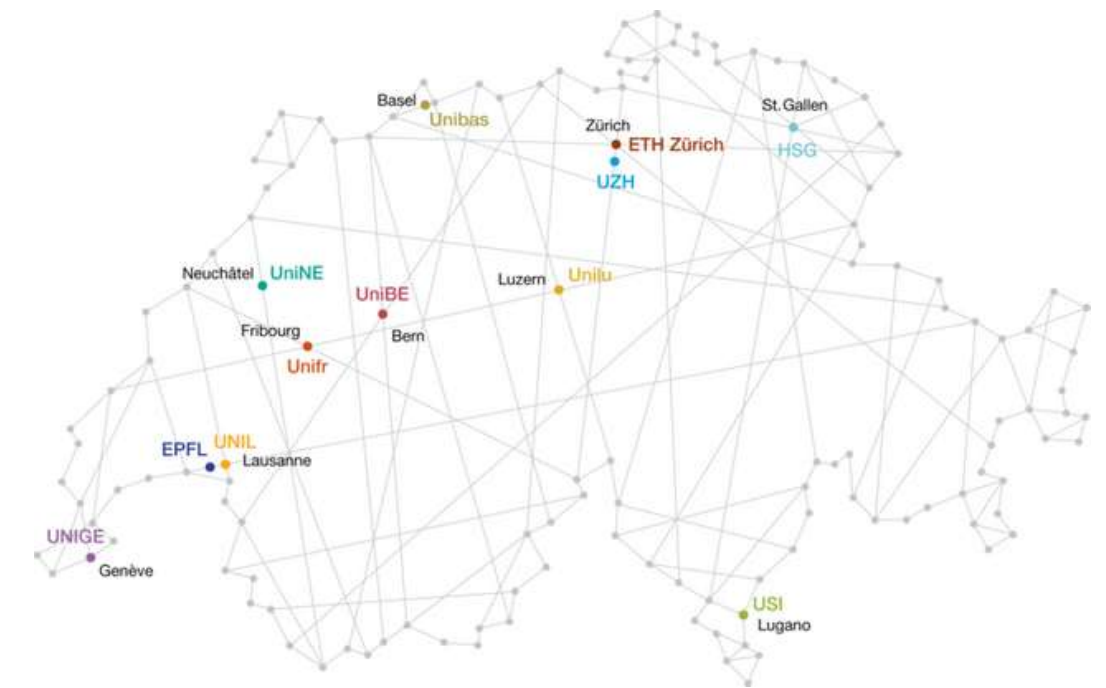
Evolution of the number of foreign students from selected countries in the Swiss public university system (2011-2020)

Source: Federal Statistical Office



Universities

- 01** Traditional Universities
 - Fundamental research and top teaching
 - 10 cantonal universities and two federal institutes of technology, with the oldest institution having been founded in 1460 (University of Basel), and the youngest in 2000 (University of Lucerne).
- 02** Swiss University of Applied Sciences and Arts
 - one private and eight public Swiss universities of applied sciences and arts
 - close partnerships with companies, institutions and other organizations in the educational sector
 - Combining practice-oriented teaching and application-oriented research
- 03** Swiss University of Teacher Education
 - 20 universities of teacher education (UTES)
 - programmes in teaching for pre-primary level, primary level, secondary level I, secondary level II (including general education and vocational education and training) and other programmes such as special needs education.



Study Culture



01

Language

English is a highly common instruction language
Research is mainly conducted in English

02

Classes

Universities combine theoretical approaches and practical applications linked to fundamental research. Universities of applied sciences and arts focus on problem-based and hands-on learning that is in general related to R&D projects with real-time implementation.

03

Leisure

Studying in a Swiss university, you will be blissed out by the fantastic variety of organized sports your university offers students.

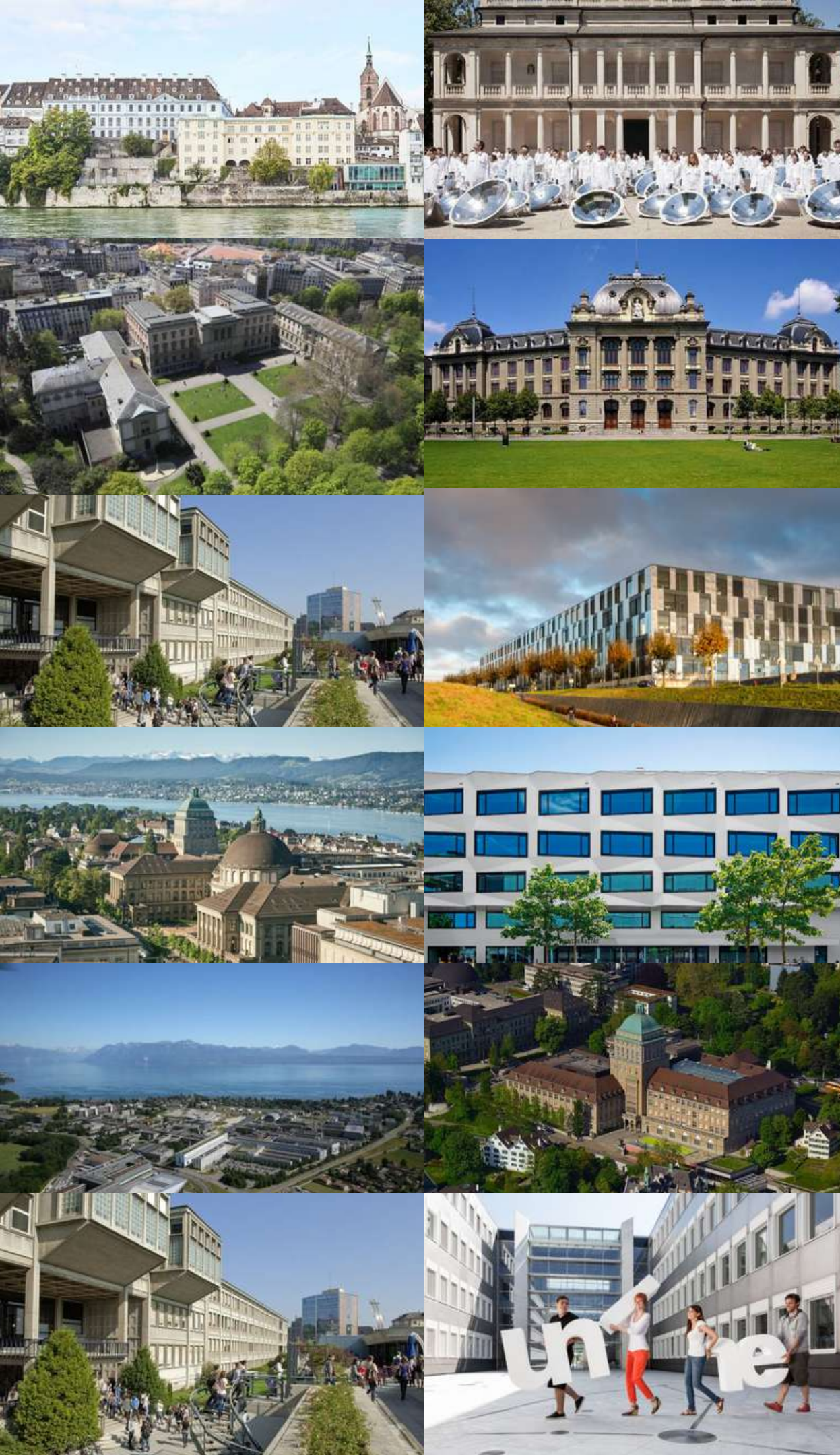
The universities also have multiple community initiatives or offer free language courses.

Living Why Switzerland?



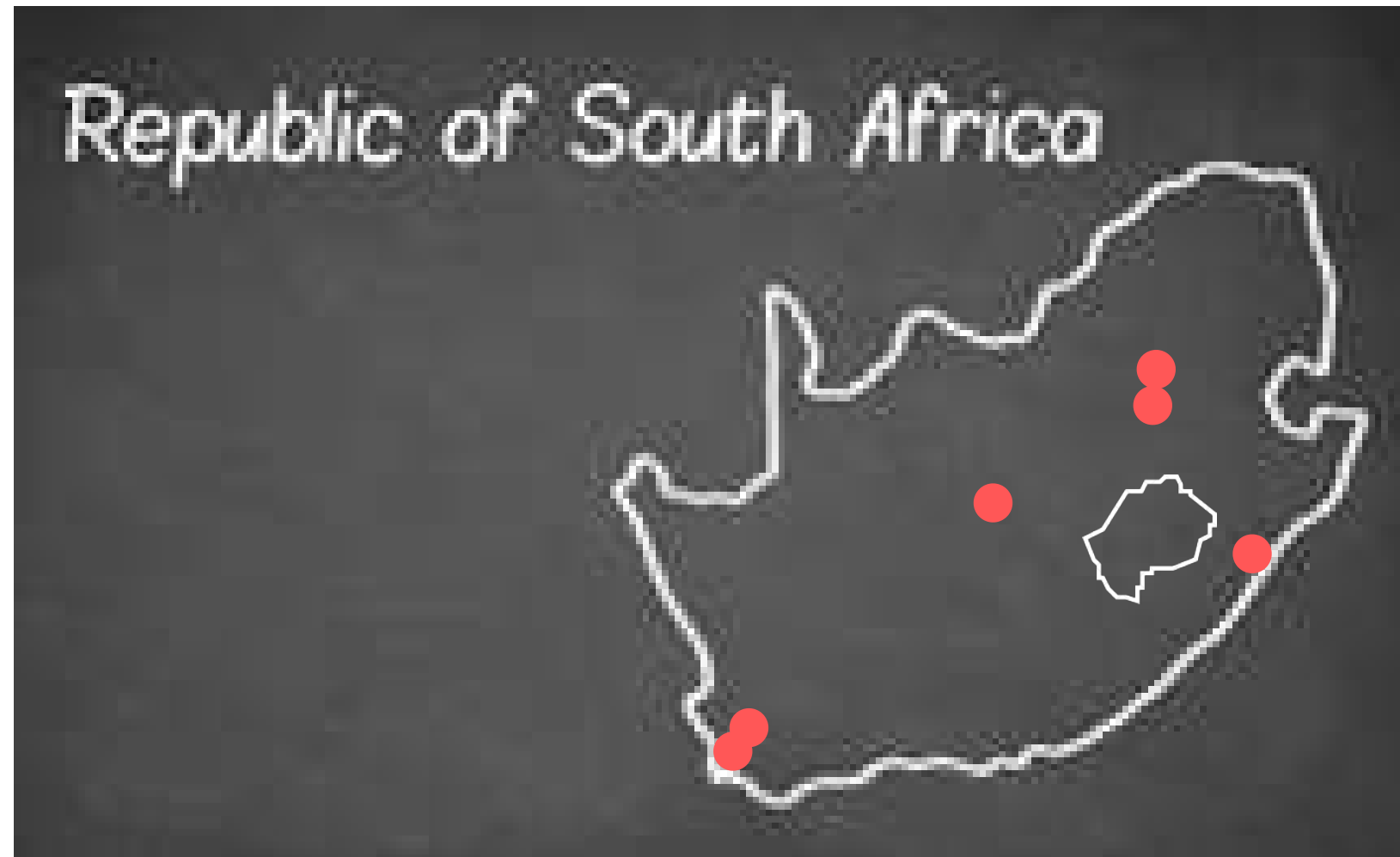
- Safety & Stability
- Quality of Life
- International Outlook
- Culture



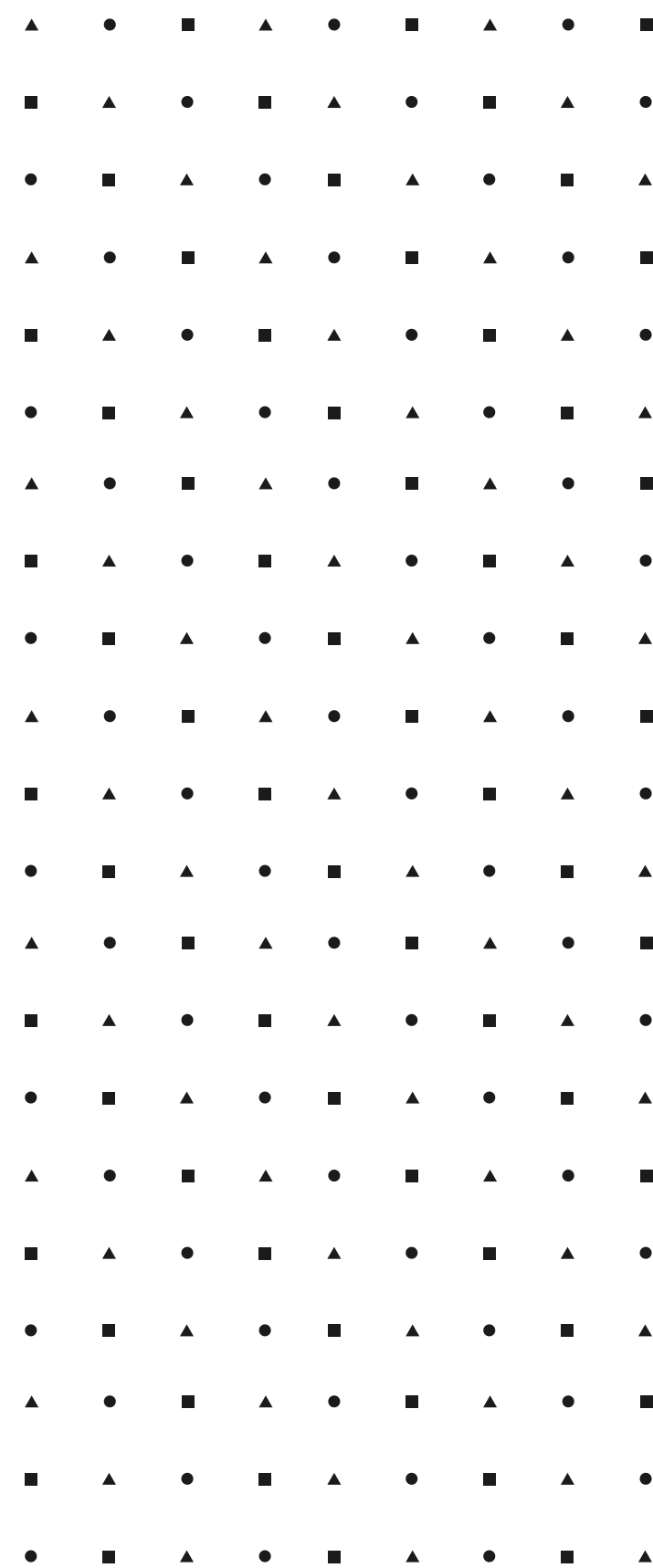


Swiss Government Scholarships

2021 South African Fellows



Mathematical Sciences/Physics/African Literature/Heritage and Museum Studies/Plant Pathology/LLM/Urban Planning/Environmental Health/Sociology/Biochemistry/Chemistry/Physiological Sciences



Research Fellowship

- full-time research in Switzerland.
- not valid for mixed research (part time in Switzerland and part time in another country)
- not available for scholars holding a PhD degree
- 12 months maximum (starting in September); no prolongation possible. The research fellowship cannot be upgraded into a prolongable PhD scholarship.

PhD Scholarship

- full-time PhD studies in Switzerland at a Swiss university. It is not valid for mixed PhD programmes
- “Cotutelle de these”: PhD students with an ongoing or planned doctoral project that is carried out within the framework of a formalized agreement between two universities (“cotutelle de thèse” cooperation between a Swiss and a foreign university) and under the joint direction of two supervisors are eligible for a 12 month research fellowship only.
- 12 months (starting in September) prolongable up to 36 months based on the achieved academic results.

Post Doc Scholarship

- full-time postdoctoral research in Switzerland.
- not valid for mixed research (part time in Switzerland and part time in another country)
- 12 months (starting in September); no prolongation possible.

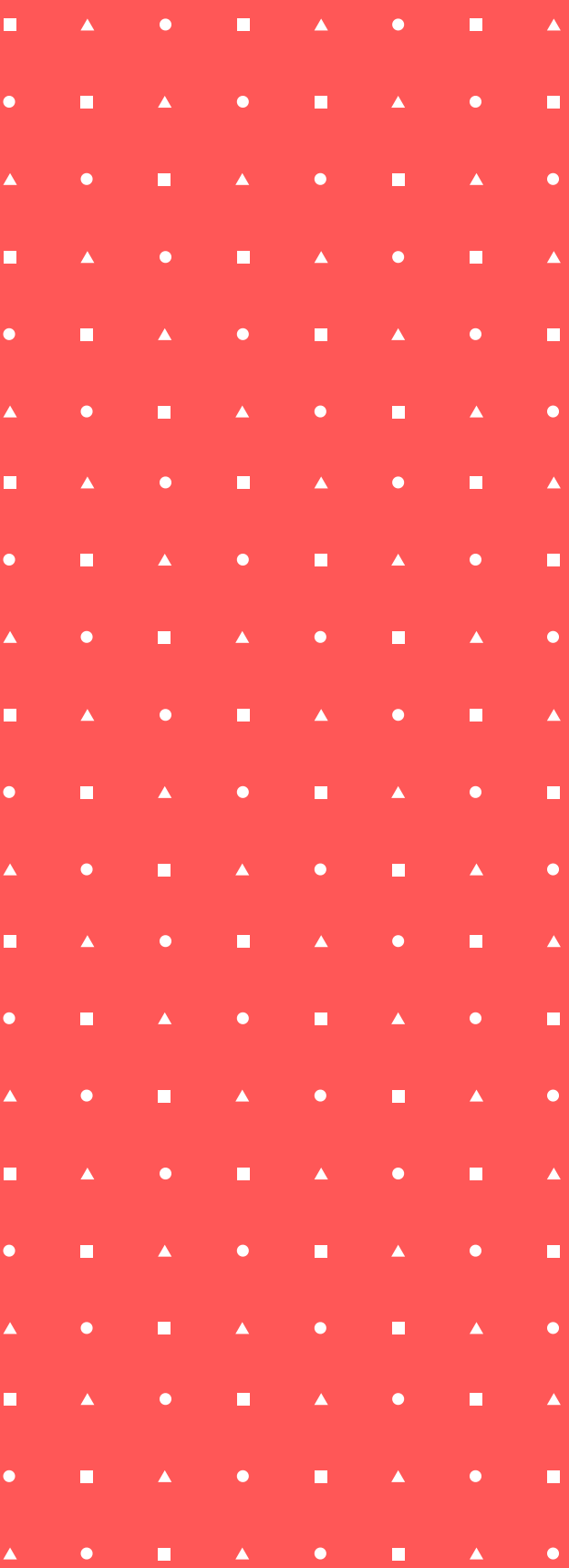
Benefits

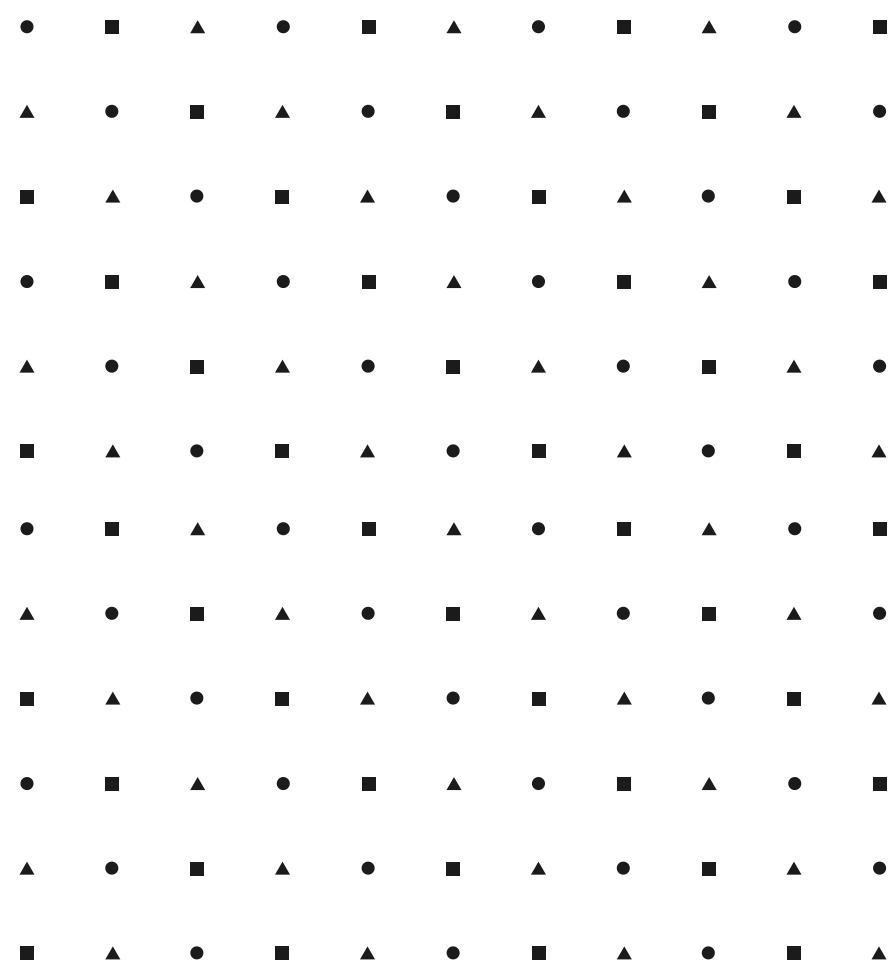
Target Group

All academic fields

Allowance per month

- CHF 1920/month (ZAR 34 849) for PhD & Research Fellows
- CHF 3500/month (ZAR 63 512) for Post Doc
- mandatory Swiss health insurance
- flight allowance (lump sum) for a ticket back to the country of origin (provided at the end of the scholarship).
- Special CHF 300 housing allowance (paid once at the beginning of the scholarship).
- One-year half-fare public transportation card.
- Support services and various trips, dinners and sightseeing tours organised for Swiss Government Excellence Scholarship holders.





Eligibility

- **Qualifications:** Research (masters July 2022); PhD (masters July 2022); Postdoc (PhD after 31 December 2018 and before July 2022)
- **Age:** PhD & research not >35yrs at moment of application (born after 31 December 1986)
- Acceptance from a Professor in Switzerland, stating that (s)he is willing to supervise the research
- Research proposal including a time frame
- Must not have benefitted from a Swiss Government Excellence scholarship in the past



Selection Criteria

The candidate

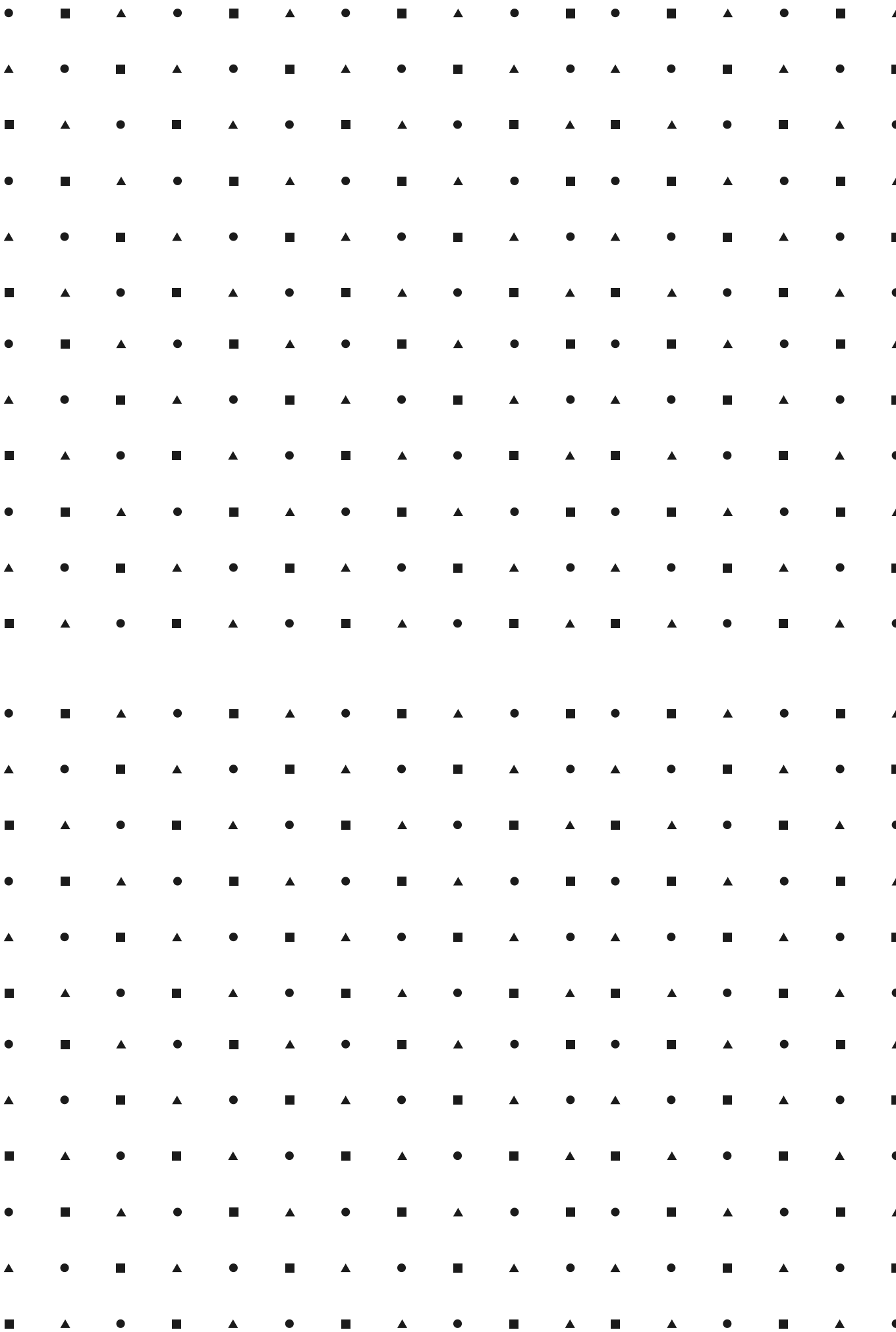
- Personal motivation
- Research capacity and academic potential
- Academic profile (grades, languages, presentation, distinctions, etc.)

The research project

- Originality
- Methodology and feasibility of the project
- Multiplier effect
- Quality of support from the supervisor, suitability of the laboratory

The academic context

- Potential for future academic cooperation





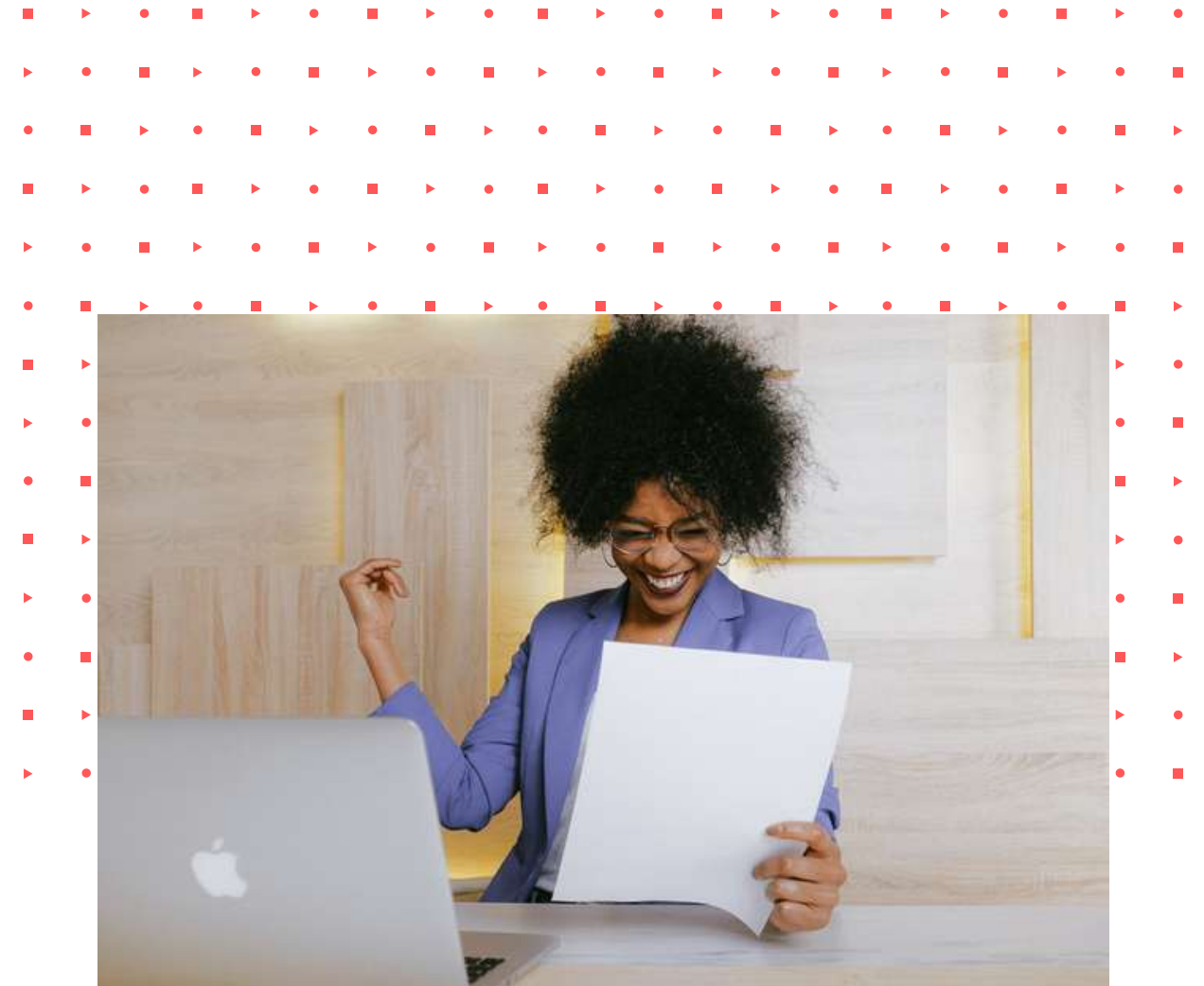
Ready?

Alumni Experience

Dr. Itani Given Madiba

Make your application a success!!

- Use the correct forms!
- Read the instructions given in the guide to applicants carefully before preparing your application and follow them
- Submit all required documents in two copies
- Pay particular attention to the research proposal
- Provide the required information only in each section
- Respect the page and character limits
- Ask for recommendation letters from people who know you and are in a position to assess your capabilities objectively



Remember that putting together a successful application requires time and patience!



- Recommendation letter from the prospective research supervisor should:
 - be specific and substantial
 - show his / her own motivation in having you as a researcher in his/her team
 - give an outlook for the future institutional collaboration
- The motivation letter is not your curriculum vitae!
- Why you, why this scholarship
- Get admission to (for PhD) / be accepted by (research and post-doc) the university of your choice
- A scholarship offered will be provisional until we get intimation of acceptance by the university
- Proof-read your application and make sure it is complete before submitting – incomplete applications will not be sent for evaluation

Submit on time! Submit on time! Submit on time!

Application Timeline

10 AUGUST 2021

Opening of the 2021 Call

- > prepare research proposal
- > search a Swiss supervising professor
- > get reference letters
- > complete application form

MARCH/APRIL 2022

Evaluation of applications by the Federal Commission for Scholarships for Foreign Students and a first announcement of results to candidates

MAY-AUGUST 2022

Finalize your scholarship

-> obtain your study visa

-> provide the commission or university with any additional documents necessary

15 DECEMBER 2021

Closing of the 2021 Call

- > application must be sent to the Embassy of Switzerland in Pretoria
- > applications will be sent to Switzerland for evaluation

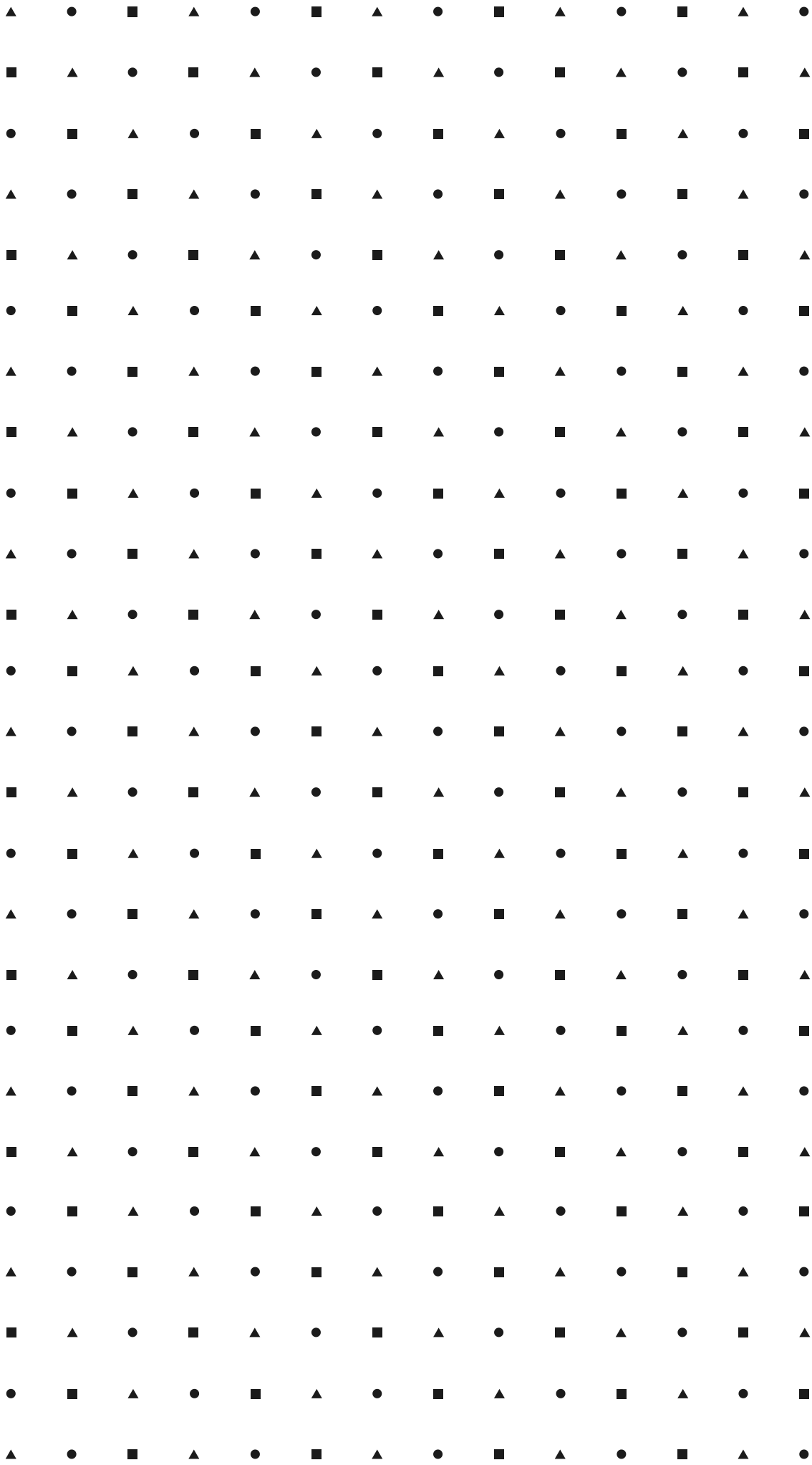
BY END OF MAY 2022

Final Selection Notification

The Foreign Commission on Scholarships will notify you directly on the outcome of your application per email

SEPTEMBER 2022

Beginning of Scholarship



Questions?

Thanks for attending!

We're here to support you!

Email us at pretoria.science@eda.admin.ch

Information on the Swiss Government Scholarships:

www.sbf.admin.ch/scholarships_eng

Information on studying in Switzerland: www.studyinswitzerland.plus

Swiss Universities:

www.swissuniversities.ch

Overview of all study programmes:

www.studyprogrammes.ch

Swiss National Science Foundation

www.snsf.ch

myScience.ch – The Swiss Portal for Research and Innovation

www.myscience.ch